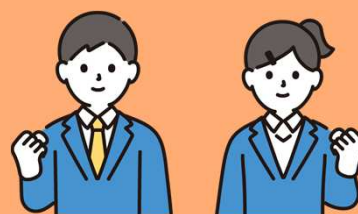


## Important Notice



# Tuition Support for High School Students

- High School Tuition Support Fund
- Temporary High School Tuition Support Fund

## High School Tuition Support Fund

(Annual income of household with a high school student is **less than 9.1 million yen** (see back side))

or

## Temporary High School Tuition Support Fund

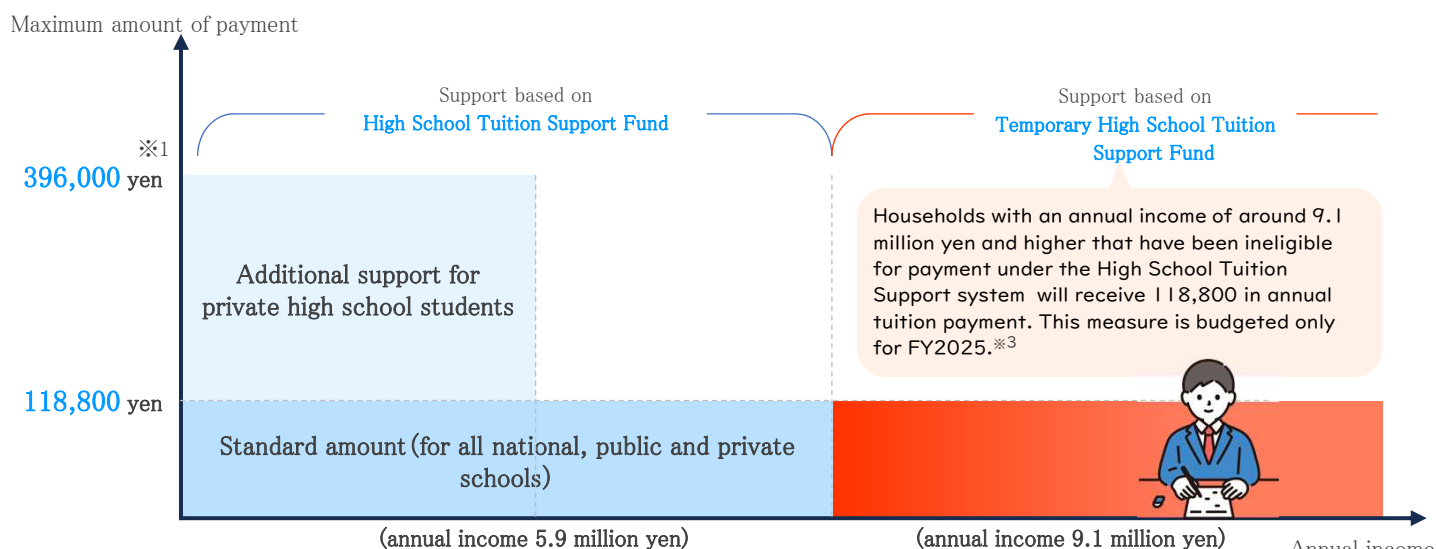
(Annual income of household with high school student is **9.1 million yen or higher**)

Households can receive tuition payments covered by the government based on either one of the above.



Households that wish to apply for support **must submit an application based on the school's instructions.**

## Support amount



※1 Private high schools (correspondence course): 297,000 yen, and for National and public technical colleges (1-3 years): 234,000 yen is the maximum amount of payment.

※2 The figure above assumes a family of four, with two parents, and one high school student and one junior high school student, with one of the parents employed (see table below on annual income criteria per family composition).

※3 The so-called "free high school tuition," proposal from FY2026 which includes the abolition of the income limit and an increase in the additional amount for private high schools from is under separate deliberation.



Depending on the school, tuition fees may be collected first until an official decision is made to grant the High School Tuition Support/Temporary High School Tuition Support, in which the equivalent amount will be reimbursed on a later date. In some cases, families with financial difficulties may be able to take advantage of measures such as a deferment of tuition fees. Please contact the school for details.

MEXT website provides up to date and detailed information on the system and contact information for each prefectural government.



文部科学省

MINISTRY OF EDUCATION,  
CULTURE, SPORTS,  
SCIENCE AND TECHNOLOGY-JAPAN



Tuition support  
for high school students

Search



# High School Tuition Support Fund

※Same application procedures and support content as FY2024.



## Application for support

### Newly enrolled students

The school will inform the student when to submit the application,  
**in April, or in another month.** Please confirm with your school for details.

### Enrolled students

The school will inform the student,  
**around July, when the student is required to submit the income statement status.**

※ **Application is done online**, in principle. **Using your My Number card** will simplify procedures.  
(Application procedures differ per prefecture so please follow the instructions from your school.)



## Standards for households' subject to receiving support

Payment amount determined based on following calculation formula(Total income for both parents)

Formula

Amount of taxable income for local residence tax

× 6% —

Amount of deductions for local residence tax

※MyNa Portal Item name, taxable income (taxable standard amount), local residence tax, amount of deductions.  
※ For government designated cities, multiply the “amount of deductions” by 3/4.

Confirm your taxable income on the **MyNa Portal / My Personal Information** website. (My Number card needed)

MyNa Portal website



## Calculation amount based on above

Calculation amount

Less than **154,500 yen**

Payment amount

**396,000 yen max.**

Calculation amount

More than 154,500 yen less than **304,200 yen**

Payment amount

**118,800 yen**

※ Eligibility for tuition payment, or the return of payment may be necessary if there is a change in the amount of taxable income (taxable standard amount), amount of deductions for local residence tax due to a revised income tax return, a correction in amount of deductions, or if there is a change in the guardian, etc. due to divorce, bereavement, etc. (If your child attends a national high school etc., you must promptly submit a notification of income status, etc. to the prefectural government through the school or MEXT).



## (Reference) Annual income criteria for households subject to tuition payment

	Number of children	118,800 yen	396,000 yen
One parent is employed	2 children(HS student/HS student) 2 Exemption for dependents	~approx. 9.5 million yen	~approx. 6.4 million yen
	2 children(University student/HS student) 1 Exemption for dependent, 1 Specified Exemption for dependent	~approx. 9.6 million yen	~approx. 6.5 million yen
Both parents are employed	2 children(HS student/under JHS) 1 Specified Exemption for dependents	~approx. 10.3 million yen	~approx. 6.6 million yen
	2 children(HS student/HS student) 2 Exemption for dependents	~approx. 10.7 million yen	~approx. 7.2 million yen
	2 children(University student/HS student) 1 Exemption for dependent, 1 Specified Exemption for dependent	~approx. 10.9 million yen	~approx. 7.4 million yen

\*The support amount is for a full-time private high school student.

\*A child younger than junior high school means the child is under 15 years old, a high school student between 16~18 years old, and a university student between 19~22 years old.  
\*Annual income assumes the household has no other income than their salary income. If both parents are employed, calculation of the total annual income is based on the assumption that each parent has the same annual income amount.



## Sudden change in household income

**Tuition payment is provided for households unable to earn their previous income** due to the inability to work from medical treatment for injury or illness of a parent/guardian, or leaving a job for reasons not attributable to the parent's own responsibility. In the event of a sudden change in household income, please consult with the school (or apply) as soon as possible.

Main requirements

If household determined to fall under criteria of a sudden change in household income

+

Annual household income falls below 5.9 mil. yen

Payment amount

Monthly

**33,000 yen**

※For public schools: 9,900 yen monthly

MEXT website on support system for sudden change in household income

[https://www.mext.go.jp/a\\_menu/shotou/mushouka/01754.html](https://www.mext.go.jp/a_menu/shotou/mushouka/01754.html)



# Temporary High School Tuition Support Fund

※This measure is limited to FY2025. Deliberation is underway for FY2026 and beyond.



## Description of the Temporary High School Tuition Support Fund

Following deliberations at the 2025 Ordinary Diet Session, households eligible to receive high school tuition grant-type payments have been expanded. Tuition payment will be provided to **households determined to have an annual income of 9.1 million or higher**. (the new measure is limited to FY2025 ※<sup>1</sup>)

Payment  
amount

Standard amount for national, public and private high schools

**118,800 yen annually**※<sup>2</sup>

※<sup>1</sup> The so-called "free high school tuition" from FY2026, which includes the abolition of the annual income limit and an increase in the additional tuition payment for private high schools, etc., is under separate deliberation.

※<sup>2</sup> 118,800 yen is the maximum amount of payment. It may differ depending on the type of school.



## Application Procedures

Newly enrolled  
Students

Enrolled  
students

Eligibility will be determined based on the assessment results of the **High School Tuition Support Fund**.

**Sometime in July,** you will receive instructions from your school, so please be sure to confirm.

- ※ **Application is done online**, in principle, for households receiving payment through the High School Tuition Support Fund.
- ※ **Those who have not applied for the High School Tuition Support Fund or who were determined ineligible (households with annual income of 9.1 million yen or higher) must reapply**, in principle, to receive payment.



**Application procedures differ per prefecture for both** the High School Tuition Support Fund and the Temporary High School Tuition Support Fund, so please follow the instructions provided by the school.

- ※ Depending on the school, tuition may be collected first until a decision is made by the school on the High School Tuition Support/Temporary High School Tuition Support. In such case, the equivalent amount will be reimbursed on a later date. In some cases, households with financial difficulties may be able to take advantage of measures such as a deferment of tuition fees. Please contact your school for details.



## Qualifications for receiving support

**The student must reside in Japan**



- ※ Other requirements include term of enrollment, so please contact the school for details.

**The following school types are subject to receiving support**

- Upper Secondary School
- Secondary Education Schools (Upper Division)
- Schools for Special Needs Education (Upper Sec. Dept.)
- Colleges of Technology (1~3 years)
- Specialized Training College (Upper Secondary)
- Specialized Training Colleges offering general courses or Miscellaneous Schools that offer national qualification training courses (requirement for admission: completion of lower secondary schooling)
- Schools for Non-Japanese Designated by the Minister of Education, Culture, Sports, Science and Technology as Equivalent to Foreign Upper Secondary Schools in Japan
- Maritime Technology Schools

## Common items for High School Tuition Support Fund, Temporary High School Tuition Support Fund

### Contacts



For details, **please contact your school or local municipality.**

Public

[https://www.mext.go.jp/a\\_menu/shotou/mu\\_shouka/1292209.htm](https://www.mext.go.jp/a_menu/shotou/mu_shouka/1292209.htm)



Private

[https://www.mext.go.jp/a\\_menu/shotou/mu\\_shouka/1292214.htm](https://www.mext.go.jp/a_menu/shotou/mu_shouka/1292214.htm)

