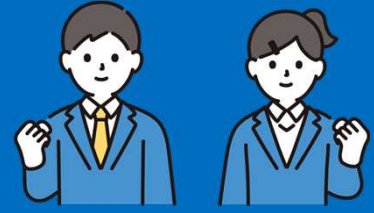


# Important Notice



# Tuition Support for High School Students

## Expansion in the criteria for households receiving high school tuition support

De facto elimination of a portion of the household annual income limit to receive high school tuition payment



### Please define the meaning of, "de facto elimination of a portion of the household annual income limit"

Following deliberations at the 2025 Ordinary Diet session, the criteria for households with high school students to receive tuition payments has been expanded. (Along with the existing ①High School Tuition Support Fund, the ②Temporary High School Tuition Support Fund has been newly added.)

#### ① High School Tuition Support Fund

- Annual income of household with a high school student **is less than about 9.1 million yen.**

New

#### ② Temporary High School Tuition Support Fund 【Limited to FY2025<sup>※1</sup>】

- Annual income of household with a high school **student is about 9.1 million yen or higher.**
- Payment of the standard amount for all national, public and private high schools, of **118,800 yen<sup>※2</sup>**,

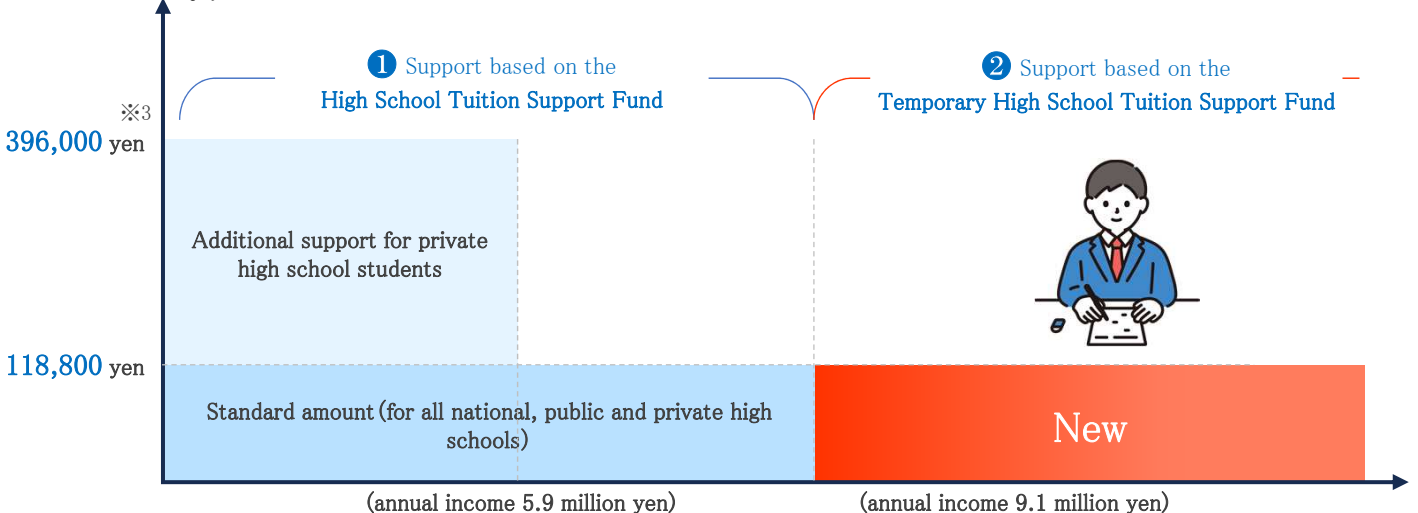
Households that wish to apply for the grant are required to follow the application procedures as requested by the school. Please contact your school on the timing of the application.

※1 The so-called "free high school tuition" from FY2026, which includes the abolition of the annual income limit and an increase in the additional tuition payment for private high schools, etc., is under separate deliberation.

※2 118,800 yen is the maximum amount of payment. It may differ depending on the type of school.

## Support amount

Maximum amount of payment



※3 For private high schools (correspondence course): 297,000 yen, and for National and public colleges of technology (1-3 years): 234,000 yen is the maximum amount of payment.

※4 The figure above assumes a family of four, with two parents, and one high school student and one junior high school student with one of the parents employed.

Annual income criteria<sup>※4</sup>



## Application for support

1

Application for  
High School  
Tuition Support  
Fund

### Newly enrolled students

The school will inform the student when to submit the application,  
**in April, or in another month** Please confirm with your school for details.

### Enrolled students

The school will inform the student,  
**around July, when the student is required to submit the income statement status.**

※ **Application is done online**, in principle. **Using your My Number card** will simplify procedures.  
(Application procedures differ per prefecture, so please follow the instructions from your school.)

2

Application for  
Temporary High  
School Tuition  
Support Fund

### Newly enrolled Students

Eligibility will be determined based on the assessment results of the **High School  
Tuition Support Fund** in Section ①.

### Enrolled students

**Around July,** you will receive instructions from the school, so please be sure  
to confirm.

※ **Application is done online**, in principle, using the High School Tuition Support Fund online system.  
※ **Those who have not applied for the High School Tuition Support Fund or were ineligible for the subsidy must, in principle, reapply to receive payment.**



**Application procedures differ per prefecture for both** the High School Tuition Support Fund and the Temporary High School Tuition Support Fund, so please follow the instructions as provided by your school.

※ Depending on the school, tuition may be collected first until a decision is made by the school on the High School Tuition Support/Temporary High School Tuition Support payments. In such case, the equivalent amount will be reimbursed on a later date. In some cases, households with financial difficulties may be able to take advantage of measures such as a deferment of tuition fees. Please contact your school for details.



## High school students subject to receive payment

The student must reside in Japan



※ There are other requirements such as the term of enrollment, so please contact the school for details.

The following school types are subject to receiving support

- Upper Secondary School
- Secondary Education Schools (Upper Division)
- Schools for Special Needs Education (Upper Sec. Dept.)
- Colleges of Technology (1~3 years)
- Specialized Training College (Upper Secondary)
- Specialized Training Colleges offering general courses or Miscellaneous Schools (requirement for admission: completion of lower secondary schooling)
- Schools for Non-Japanese Designated by the Minister of Education, Culture, Sports, Science and Technology as Equivalent to Foreign Upper Secondary Schools in Japan
- Maritime Technology Schools



## Contacts

For details, please contact your school or local municipality.

Public

[https://www.mext.go.jp/a\\_menu/shotou/mushouka/1292209.htm](https://www.mext.go.jp/a_menu/shotou/mushouka/1292209.htm)



Private

[https://www.mext.go.jp/a\\_menu/shotou/mushouka/1292214.htm](https://www.mext.go.jp/a_menu/shotou/mushouka/1292214.htm)



The MEXT website provides detailed, up to date information on the system and contact information for each prefectural government.



文部科学省

MINISTRY OF EDUCATION,  
CULTURE, SPORTS,  
SCIENCE AND TECHNOLOGY-JAPAN



Tuition support for  
high school students

Search

